



BEYOND THE CODE

**MEASURING 42'S IMPACT
ACROSS 14 CAMPUSES**

42 turns untapped human potential into measurable economic and social impact.

Across 58 campuses in 30 countries, 42 is built as a network of autonomous partners. Each campus is rooted in its local ecosystem, while contributing to a shared educational model designed to empower individuals to thrive in a rapidly evolving world. By fostering autonomy, collaboration, and diversity, 42 enables people from all backgrounds to become confident, resilient problem-solvers and active contributors to their communities.

This report focuses on 14 campuses across 8 countries. These campuses actively supported and co-financed the study, contributing to a collective effort to better understand and measure the impact of the 42 model. The results are striking: for every €1 invested, an average of €14 is generated in the economies analyzed, based on independent economic modelling.

But numbers alone do not capture the full picture. 42 acts as a powerful local catalyst. It attracts untapped talent, strengthens regional ecosystems, and addresses critical skill gaps. More importantly, it transforms lives by opening access to opportunity, building confidence, and enabling long-term social mobility.

What makes 42 unique is its ability to combine local autonomy with a shared vision, and inclusion with excellence at scale. Our model proves that opening access to education does not dilute performance. It amplifies it.

42 is the engine that enables this transformation. Your support, whether as a partner, investor, or advocate, turns potential into real-world change. Thank you for making this impact possible.

–

SOPHIE VIGER,
CEO of 42



Measuring 42's impact

42 commissioned an independent organization to assess its social and economic impact. The study covers 14 campuses across eight countries, which contributed to and helped finance the research, offering valuable insights into the impact generated by 42. By moving from intuition to evidence, the report provides data to guide strategic decisions and serves as a reference for understanding and evolving the global impact of the 42 model.

This study examines 42's impact across two complementary dimensions:

The economic dimension assesses how 42 stimulates activity in the regions where its campuses operate. It examines the contribution of student expenditures, campus operations, and Alumni employment to local and global economies. This work draws on the Local Footprint® model developed by UTOPIES.

The social and societal dimension examines how 42 transforms the lives of its students, increases opportunities, strengthens diversity, and develops both technical and human skills. It is built on a framework grounded in academic literature on the social impact of education systems, and informed by testimonies from students, staff, experts, and partners across the world.

42

Founded in  **2013**

 **27K**

active students throughout the world

 **61K**

students since the creation of 42

 **58**

campuses worldwide

 **90%**

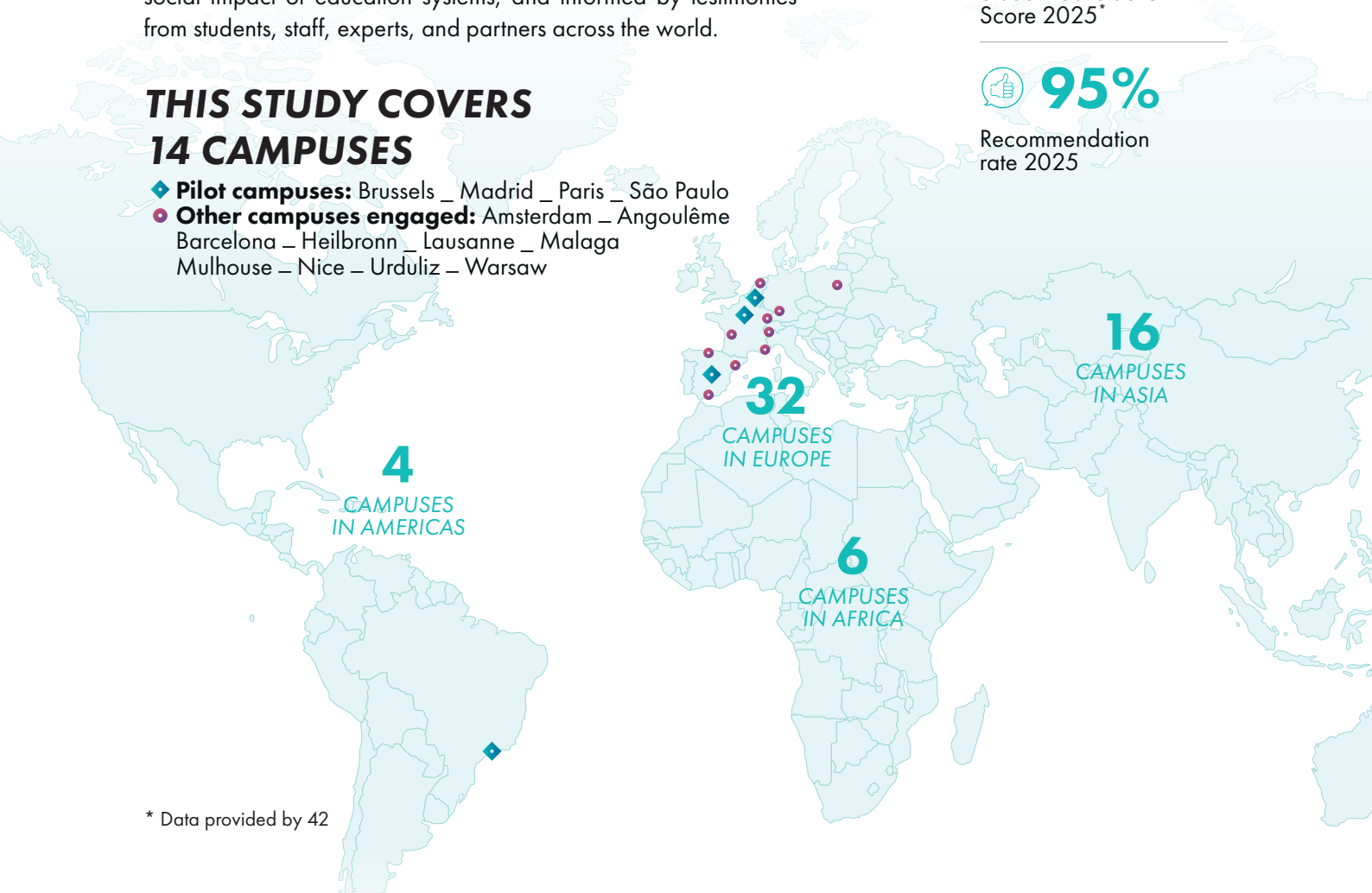
Student Satisfaction Score 2025*

 **95%**

Recommendation rate 2025

THIS STUDY COVERS 14 CAMPUSES

- ◆ **Pilot campuses:** Brussels _ Madrid _ Paris _ São Paulo
- **Other campuses engaged:** Amsterdam _ Angoulême _ Barcelona _ Heilbronn _ Lausanne _ Malaga _ Mulhouse _ Nice _ Urduliz _ Warsaw



* Data provided by 42

Impact on local development

42 acts as a local catalyst, attracting untapped talent and embedding itself in regional ecosystems. By establishing its campuses in diverse regions, 42 contributes to the vitality of local ecosystems (educational, economic and community) by fostering collaborations, meeting regional skill needs, and attracting new talent.

BASED ON 2,175 SURVEY RESPONDENTS FROM 42 ALUMNI:

93%

are employed or self-employed

94%

work in the country where they studied

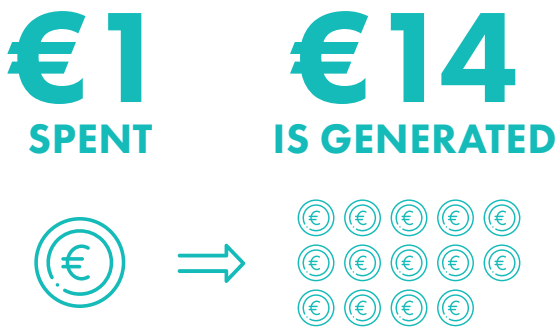
96%

work in the IT field



42 trains high potential workers driving local economic growth

ON AVERAGE FOR EVERY



in the countries included in this study.*

ALUMNI SUPPORT

+2 ADDITIONAL
LOCAL JOBS



in countries where 42 is present.

42 Alumni create economic value that exceeds their salaries (€0.9 billion). They contribute to the economic activity of the companies where they work, which, in turn, creates additional economic value through direct, indirect, and induced effects.

Beyond their local impact in the 8 countries where 42's presence was analyzed, 42 Alumni support jobs worldwide through a ripple effect in the global economy. Overall 22 880 jobs are supported worldwide, generating €1.5 Bn in GDP.

NEARLY

13K

local jobs were supported in the 8 countries where 42's presence was analyzed in this study

€0.9 Bn

GDP contribution in the 8 countries where 42's presence was analyzed

Beyond their immediate results, IT professionals play a key role in digital transition and local innovation. They create cross-sector synergies, boost local competitiveness and enhance regional attractiveness by spreading skills and technologies. These positive externalities extend across many professions and sectors. They occur not only through direct interactions between developers and other businesses but also through broader, systemic dynamics such as the diffusion of innovation, cluster effects, increased regional appeal, and improvements in local skills.



*excluding CAPEX, based on the Local Footprint® economic modelling

Social and societal impact: key principles

The impact of 42 goes far beyond students learning to code. It emerges through the opportunities the school creates for people from very different backgrounds, through the confidence and skills they build by learning with and from one another, and through the way the model removes many of the traditional barriers that limit access to education.

It also appears in the influence 42 has on its environment, from the diversity it brings into the tech sector to the connections it creates in local communities and the new ways of learning it demonstrates every day.

Together, these effects define the distinctive contribution of 42 to both individuals and society.

42 offers a **unique and innovative educational model** that attracts and promotes greater diversity than other programs.

By bringing **skilled new profiles** (technical, social, and civic skills) to the market, 42 responds to the **specific needs of regions and produces economic value.**

EDUCATIONAL INNOVATION



TUITION-FREE



PEER-LEARNING



OPEN TO ALL



TRANSFORMATIVE



Impact on students

EQUITY & INCLUSION

OPEN TO ALL: no fees, no prerequisites.

DIVERSE PATHS: different backgrounds, equal opportunities.

INCLUSIVE CULTURE: everyone can learn, belong and succeed.

SOCIAL MOBILITY

TECHNICAL SKILLS: real code, real projects, real jobs.

SOCIAL & CIVIC SKILLS: collaboration, confidence, communication.

NEW TRAJECTORIES: enabling students to access opportunities and careers they might not have otherwise.

76%

of students who responded would not have attended 42 if it had required a fee*

Impact on society & regions

TERRITORIAL ANCHORING

LOCAL IMPACT: training talent to meet regional needs.

COMMUNITIES: engaging partners, associations, and ecosystems.

CAMPUSES AS LOCAL HUBS: fostering innovation and collaboration at the community level.

SYSTEMIC INNOVATION

A MODEL THAT INSPIRES: setting new standards for education.

CHANGING EDUCATION: transforming how people learn, collaborate, and grow.

94%

of 42 Alumni who responded and are currently employed or self-employed work in the country where they studied**

These dimensions are based on the analytical framework developed by UTOPIES to assess 42's social and societal impact.

They draw on key international references on educational and social outcomes, including OECD work on the social impact of education (OECD 2007), OECD guidance on social impact measurement for the social and solidarity economy (OECD 2023), and the EU's structural indicators on equity in education (Eurydice 2023).

*UTOPIES 2025 survey, 1949 respondents

** Data provided by 42

Driving innovation in education

By placing peer learning, self-directed progression and a fully project-based, gamified curriculum at the core of its model, 42 contributes to reshaping educational paradigms and inspiring new approaches to learning.

In this sense, the systemic innovation generated by 42 lies not only in what students learn, but in how they learn: through autonomy, mutual support, experimentation and iteration.

This model continually redefines the act of learning itself and contributes to inspiring new practices across the broader education ecosystem.

92%


consider 42's teaching method to be highly **innovative**

75%

had a problem with the **traditional** education system*

90%

believe that 42 has completely or partially **resolved** this obstacle*



"We are faced with a disruptive model, much more innovative than anything we see in traditional higher education."

Independent sociologist interviewed for the study

*UTOPIES 2025 survey, 1949 respondents

** Data provided by 42

Promoting a fair inclusive model

87%

believe that 42 promotes an **inclusive** environment*

93%

express a strong **sense of safety** at 42*

2/3

of students in financial difficulty or serious financial hardship **successfully complete** their studies**

42 removes traditional barriers to access by being free, open to all, and welcoming diverse profiles. Its inclusive model attracts those excluded by the system and fosters a strong sense of safety and belonging.

Social diversity is embraced through targeted initiatives supporting gender equity, neurodiversity, intergenerational inclusion, cultural and geographic diversity, and access regardless of economic background.

“Everything we do is free for the students. We never charge them anything. That’s one of the key components of the project’s success.”

Inès Temes Fuertes, Director of Social Innovation, Education, Employment and Volunteering at Fundación Telefónica, sponsor of 42 Spain

“42 offers a great solution for anyone who doesn’t fit into traditional learning environments.”

Student interviewed



*UTOPIES 2025 survey, 1949 respondents

** Data provided by 42

Fostering students' technical and personal growth, beyond the school

TECHNICAL SKILLS

At 42, students gain solid technical skills through a hands-on, project-driven approach that prepares them for real-world challenges. They learn to search, test, and build autonomously, developing a deep problem-solving mindset that employers actively seek.

This learning-by-doing model helps students from all backgrounds progress effectively, even without prior experience. By removing tuition and academic prerequisites, 42 creates genuine opportunities for students who might otherwise be excluded from the tech sector.

"I was struggling, doing odd jobs. Now I'm a developer at a big company."

Student interviewed

SOCIAL AND CIVIC SKILLS

Beyond code, 42 strengthens essential social and civic skills that support personal growth and long-term mobility. Peer learning encourages collaboration, communication, and openness to difference, while the diversity of profiles on campus broadens perspectives and builds confidence.

Students learn to navigate uncertainty, support one another, and engage constructively within a community. These experiences help them rethink what is possible for their future and access opportunities that go far beyond the school itself.

750

businesses created by 42 Alumni (18% are entrepreneurs or freelance)**

86%

build meaningful personal and professional **relationships** at 42*

"Success also, and above all, lies in developing soft skills throughout the curriculum. These skills are less visible than technical skills but often much more fundamental."

Pablo Mateos Toro,
Director of 42 Madrid

*UTOPIES 2025 survey, 1949 respondents

** Data provided by 42



“Besides technical skills, constant interaction with people from different backgrounds requires communication, empathy, and active listening. For many, this resulted in personal growth, such as overcoming shyness, learning to ask for help, and developing soft skills.”

Student interviewed



METHODOLOGY, LIMITS, CONTACTS.

This assessment combines several complementary sources: scientific literature on educational impact, quantitative data from 42's surveys and campus indicators, and qualitative insights from interviews and focus groups. LOCAL FOOTPRINT®, the spatial economic modelling tool developed by UTOPIES, completes the analysis by examining each campus's interactions with its local economy and regional dynamics. Together, they offer a structured view of 42's social and societal footprint.

Economic weight does not measure impact directly. It combines 42 Alumni revenue with 42's operational expenses and student expenditures.



We thank the students who shared their experiences, the campus teams who supported the process, and the experts and partners who contributed their perspectives. Their voices add depth to this assessment, affirming where 42 creates value. They also remind us of the core ambition of 42: widening access, opening new paths, and enabling more people to transform their lives through learning.